

PART OF S.E. 1/4 OF SEC. 14, & PART OF N.E. 1/4 OF SEC. 23, T.5N., R.1W., S.L.B. & M. 171  
**BONNEVILLE TERRACE SUBDIVISION NO. 2**

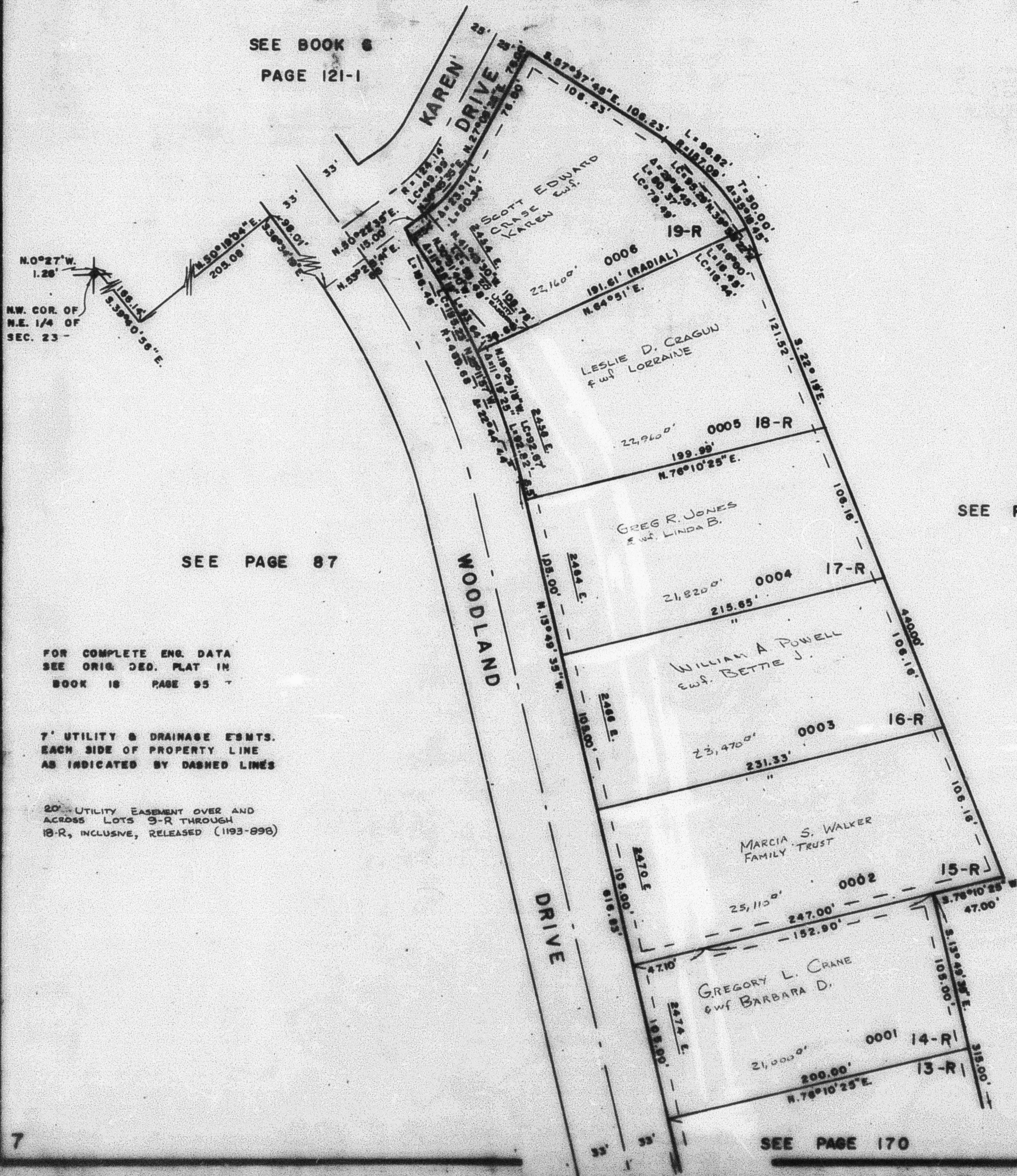
TAXING UNIT 159

IN WEBER COUNTY

PREFIX 07-171

SCALE 1"=50'

SEE BOOK 8  
PAGE 121-1



SEE PAGE 87

SEE PAGE 87

FOR COMPLETE ENG. DATA  
SEE ORIG. DED. PLAT IN  
BOOK 18 PAGE 95

7' UTILITY & DRAINAGE ESMTS.  
EACH SIDE OF PROPERTY LINE  
AS INDICATED BY DASHED LINES

20' UTILITY EASEMENT OVER AND  
ACROSS LOTS 9-R THROUGH  
18-R, INCLUSIVE, RELEASED (1193-898)

SEE PAGE 170

W.F.A. 6-78